

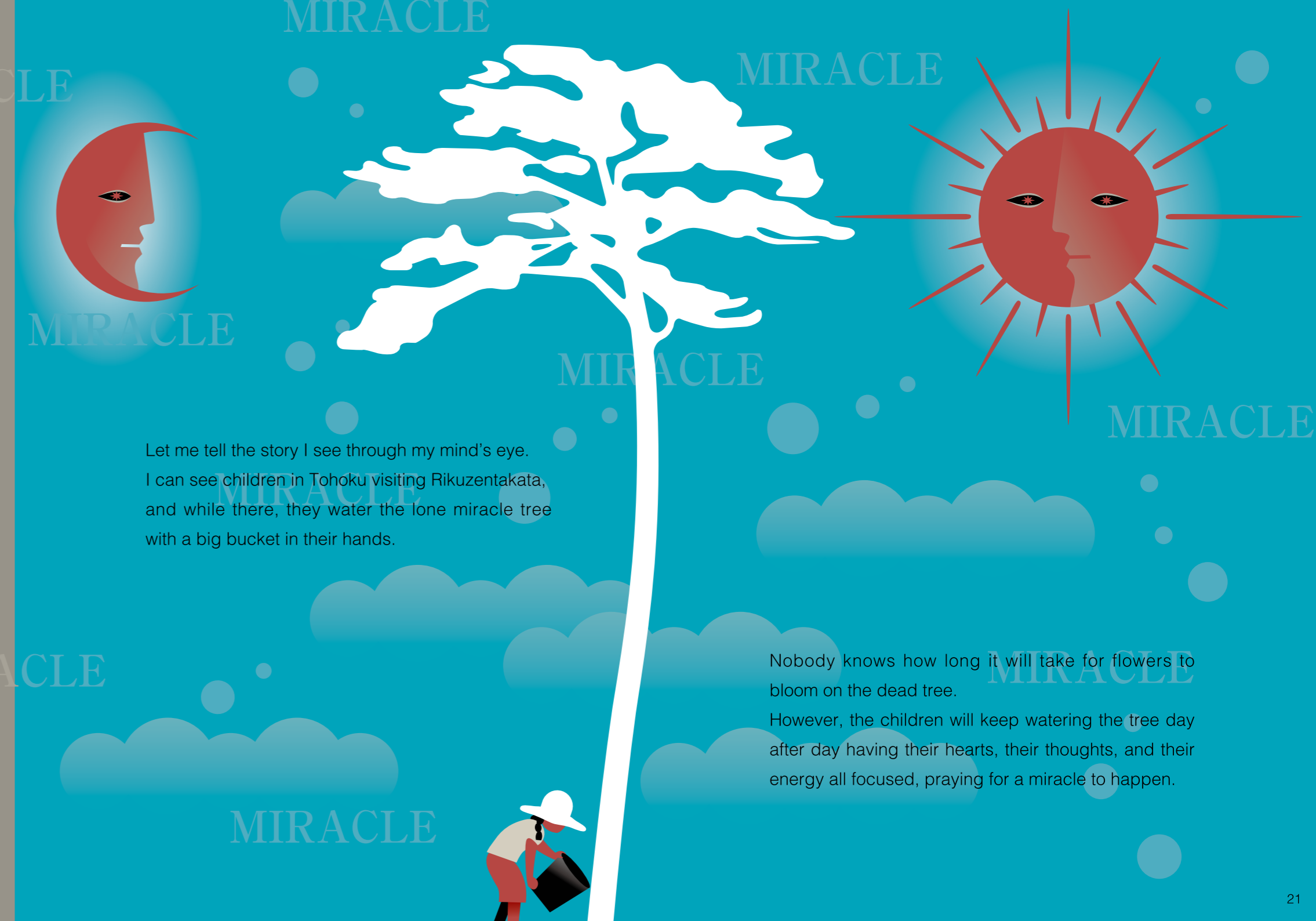


What will happen to the lone tree which survived in Rikuzentakata?  
Is the tree going to be cut down?  
Should it be left as a monument?

This tree should be recognized as a miracle.

In Rikuzentakata, which is so similar to Tono, where one can communicate with the world of the dead, a miracle is the one thing that people eagerly yearn for.

This lone tree should be allowed to remain deeply rooted in the soil of Rikuzentakata, a symbol of the birth of a new miracle.



Let me tell the story I see through my mind's eye.  
I can see children in Tohoku visiting Rikuzentakata,  
and while there, they water the lone miracle tree  
with a big bucket in their hands.

Nobody knows how long it will take for flowers to bloom on the dead tree.  
However, the children will keep watering the tree day after day having their hearts, their thoughts, and their energy all focused, praying for a miracle to happen.